



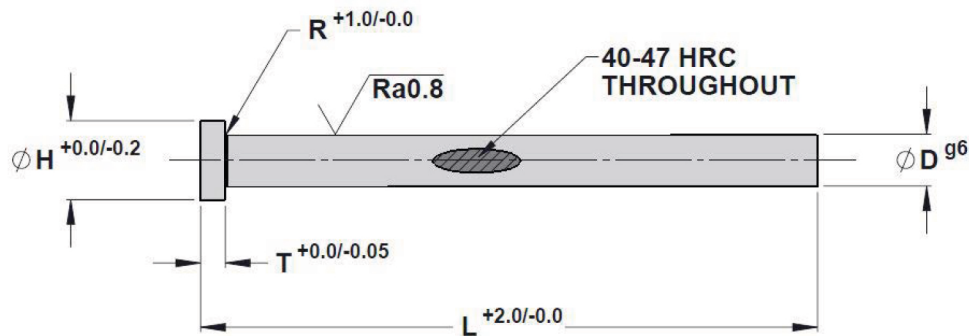
Turn To The Industry Experts

Metric DIN Core Pins

- Premium hotwork steel
- Tolerances ensure close fit for coring purposes
- Etched for easy Identification
- Heads annealed on core pins 6" or longer



SPECIFICATIONS	
D Pin Diameter Tolerance	g6
Annealed Head	Yes
H Head Diameter Tolerance	-0.20
T Head Thickness Tolerance	-0.05
R Pin to Head Radius Tolerance	+0.20
L Overall Length Tolerance	+2.0
Etched for Identification	Yes



Standard: Metric DIN
 Material: H-13 / 1.2344 Steel
 Through-Hardened: 40 - 47 HRC

- Stocked items
- 2-3 Week Delivery

CATALOG NO.	D PIN DIA.	H HEAD DIA.	T HEAD THICK.	R RADIUS	L OVERALL LENGTH											
					80	100	125	160	200	250	315	400	500	630	800	1000
MC15-	1.5	3	1.5	0.2		●	■			●						
MC18-	1.8	3	1.5	0.2		●	■									
MC20-	2.0	4	2	0.2	■	●	■	●	■							
MC22-	2.2	4	2	0.2		●	■		■							
MC25-	2.5	5	2	0.3		●	■	●	■	■						
MC27-	2.7	5	2	0.3		●	■	●	■							
MC30-	3.0	6	3	0.3	■	●	■	●	■	■	■					
MC32-	3.2	6	3	0.3		●	■		●	■	■					
MC34-	3.4	6	3	0.3		●	■			■	■					
MC35-	3.5	7	3	0.3		●	■	●	■	■	■					
MC37-	3.7	7	3	0.3		●	■		●	■						
MC40-	4.0	8	3	0.3		●	■	●	■		●	■	■			
MC42-	4.2	8	3	0.3		●	■	●	■							
MC45-	4.2	8	3	0.3		●	■	●	■							

Add length to end of catalog number (i.e. MC15-100)

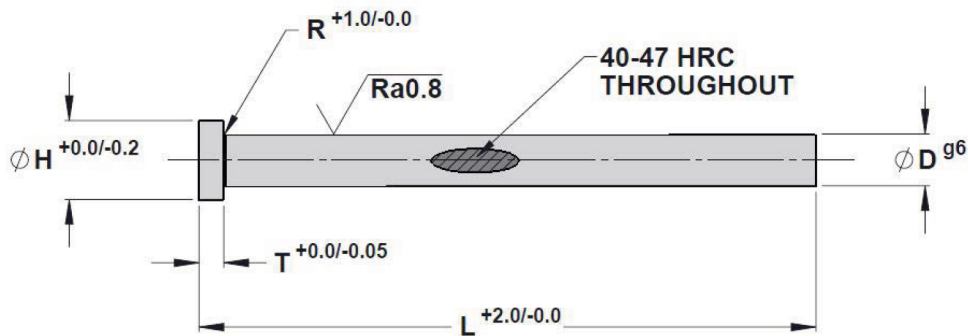
Continued on next page

Metric DIN Core Pins

- Premium hotwork steel
- Tolerances ensure close fit for coring purposes
- Etched for easy Identification
- Heads annealed on core pins 6" or longer



SPECIFICATIONS	
D Pin Diameter Tolerance	g6
Annealed Head	Yes
H Head Diameter Tolerance	-0.20
T Head Thickness Tolerance	-0.05
R Pin to Head Radius Tolerance	+0.20
L Overall Length Tolerance	+2.0
Etched for Identification	Yes



Standard: Metric DIN
Material: H-13 / 1.2344 Steel
Through-Hardened: 40 - 47 HRC

- Stocked items
- 2-3 Week Delivery

CATALOG NO.	D PIN DIA.	H HEAD DIA.	T HEAD THICK.	R RADIUS	L OVERALL LENGTH											
					80	100	125	160	200	250	315	400	500	630	800	1000
MC50-	5.0	10	3	0.3		●		●	●		●					
MC52-	5.2	10	3	0.3		●										
MC55-	5.5	10	3	0.3		●		●								
MC60-	6.0	12	5	0.5		●		●	●		●					
MC62-	6.2	12	5	0.5		●										
MC65-	6.5	12	5	0.5		●					●					
MC70-	7.0	12	5	0.5	●		●			●						
MC75-	7.5	12	5	0.5			●		●							
MC80-	8.0	14	5	0.5	●		●	●		●	●					
MC82-	8.2	14	5	0.5			●									
MC85-	8.5	14	5	0.5	●		●		●							
MC90-	9.0	14	5	0.5	●		●	●								
MC100	10.0	16	5	0.5	●		●	●								
MC102	10.2	16	5	0.5			●									

Add length to end of catalog number (i.e. MC50-100)

Continued on next page



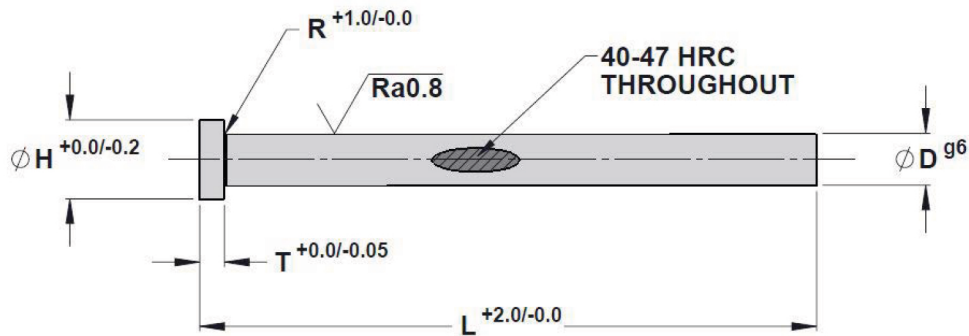
Turn To The Industry Experts

Metric DIN Core Pins

- Premium hotwork steel
- Tolerances ensure close fit for coring purposes
- Etched for easy Identification
- Heads annealed on core pins 6" or longer



SPECIFICATIONS	
D Pin Diameter Tolerance	g6
Annealed Head	Yes
H Head Diameter Tolerance	-0.20
T Head Thickness Tolerance	-0.05
R Pin to Head Radius Tolerance	+0.20
L Overall Length Tolerance	+2.0
Etched for Identification	Yes



Standard: Metric DIN
 Material: H-13 / 1.2344 Steel
 Through-Hardened: 40 - 47 HRC

- Stocked items
- 2-3 Week Delivery

CATALOG NO.	D PIN DIA.	H HEAD DIA.	T HEAD THICK.	R RADIUS	L OVERALL LENGTH											
					80	100	125	160	200	250	315	400	500	630	800	1000
MC105	10.5	16	5	0.5	•	■	•					■				
MC110	11.0	16	5	0.5	•	■	•					■				
MC120	12.0	18	7	0.8	•	■	•	•		•		■				
MC122	12.2	18	7	0.8		■						■				
MC125	12.5	18	7	0.8		■	•					■				
MC140	14.0	22	7	0.8	•	■	•	•		•		■				
MC160	16.0	22	7	0.8	•	■	•	•				■				
MC180	18.0	24	7	0.8		■	•			•		■				
MC200	20.0	26	8	1		■	•					■				
MC250	25.0	32	10	1			■				•	■				
MC320	32.0	40	10	1				■				■				

Add length to end of catalog number (i.e. MC105-80)